

Britain



Red London phonebooth



CAPITAL CITY: London

LANGUAGE: English

CURRENCY: Pound Sterling

VISA: SA passport holders do not require a visa (at time of going to print)

AREA: 244,101 km²

TIME DIFFERENCE:

Apr - Oct : 1 hour behind SA time

Nov - Mar: 2 hours behind SA time

HEALTH REQUIREMENTS:

No vaccinations are required

Full of diversity in whichever direction you travel, you will find a wide variety of scenery and different cultures to explore in Britain.

London the grand essence of its very name suggests history and might. Its opportunities for entertainment by day and night go on and on. It's a city that exhilarates and intimidates, excites and ignites something in everyone. Somebody once said, "When you're tired of London, you're tired of life"!

WHAT THINGS COST

These prices are an average price and may vary according to areas, hotels and season.
(Pound Sterling)

Glass of wine	£ 2.50
Beer	£ 2.50
Bottle of water	£ 1
Coffee/Tea	£ 2
Cold drinks	£ 1
Toasted Sandwich	£ 3
Pub Lunch	£ 15



The Original London Sightseeing Tour

This famous tour provides more than just a great way to travel around London. It is the only sight-seeing tour to offer you total choice and flexibility. The Hop-on Hop-off service allows you to board any of the tour routes at over 90 different stops with a commentary in English or many other languages. The Kids' Club provides an educational but fun alternative for 5-12 year olds. The services are frequent and reliable with tours running daily, every 15-20 minutes. The Original Tour allows you to experience all the magical sights and sounds of London in a comfortable and secure environment. *Tours start at 10h00. You must start at one of the main points. One complete circuit takes approximately 2 hours. You can Hop on and Hop off as often as you wish. Your ticket is valid for 24 hours from the time you first board the bus.*

from £19 pp



★★

Tavistock Hotel

Russell Square



LOCATION: Russell Square, London.
ACCOMMODATION: 395 en-suite rooms.
FACILITIES: Television, direct-dial telephone, dial-up internet, tea/coffee making facilities, car parking facilities (chargeable), laundry service and 24-hour room service.
from £33 - £45 pp



★★★

Royal National Hotel

Russell Square



LOCATION: Russell Square, London
ACCOMMODATION: 1630 en-suite rooms.
FACILITIES: Satellite TV channels, radio, tea/coffee making facilities, on-site leisure centre (fee payable locally) including an indoor swimming pool, sauna, steam room, Jacuzzi, aerobic studios, three gyms and an ATM.
from £31 - £43 pp



★★★

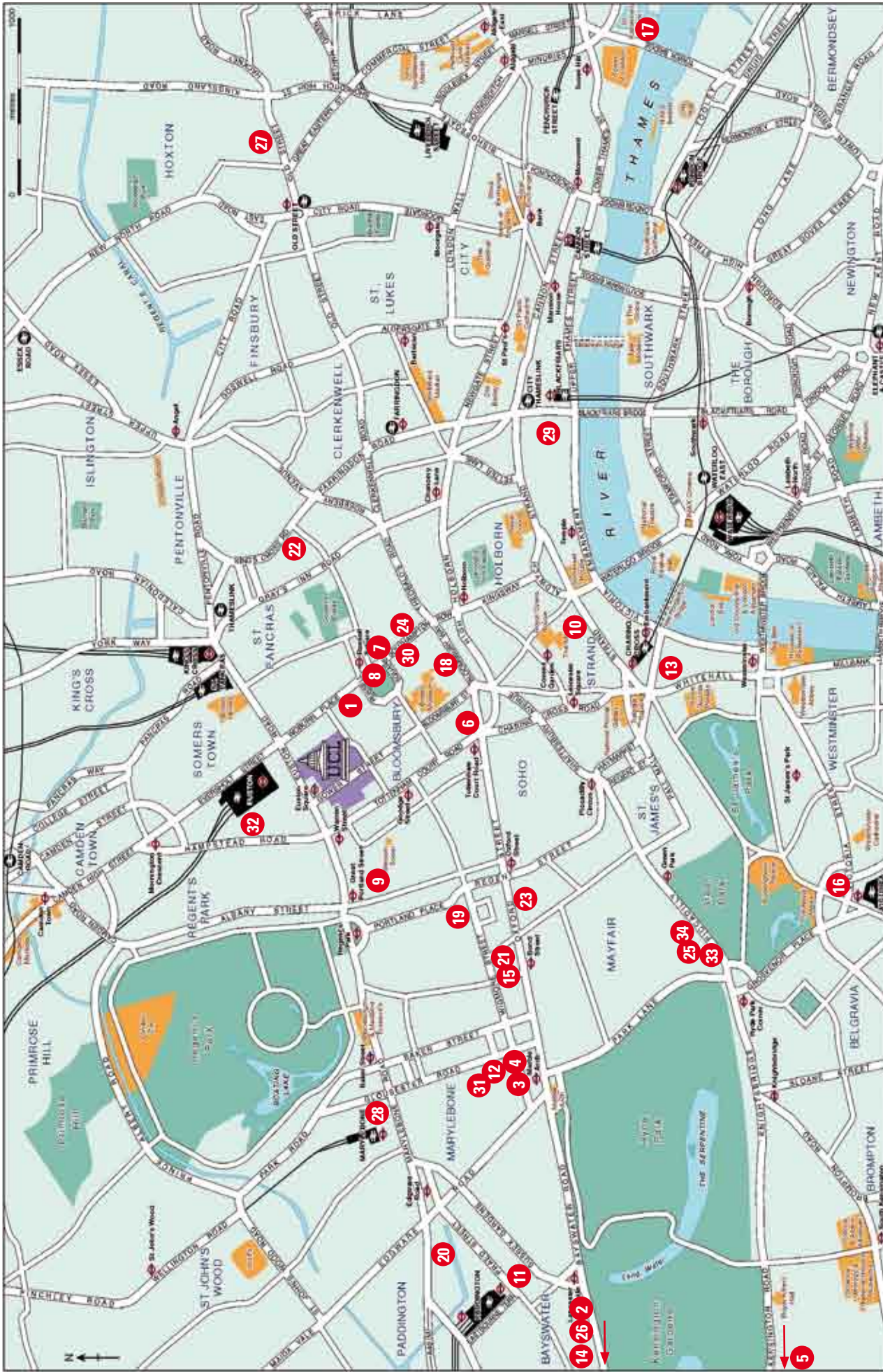
President Hotel

Russell Square



LOCATION: Russell Square, London.
ACCOMMODATION: 523 en-suite rooms.
FACILITIES: Satellite television, radio, tea/coffee making facilities, bar, hairdresser, private parking (chargeable) and shopping arcade.
from £36 - £48 pp

London Map



- | | | | | |
|-------------------------|-----------------------------|-------------------------------|-------------------------------|---------------------------------|
| 1. Royal National Hotel | 8. President Hotel | 15. Jury's Clifton Ford | 22. Holiday Inn King's Cross | 29. Crowne Plaza Lon - The City |
| 2. Corus Hyde Park | 9. Holiday Inn Regents Park | 16. Thistle Westminster | 23. Westbury Mayfair | 30. Bedford Hotel |
| 3. Cumberland Hotel | 10. Strand Palace | 17. The Tower Hotel | 24. Bloomsbury Park Hotel | 31. Radisson SAS Portman |
| 4. Thistle Marble Arch | 11. Norfolk Plaza | 18. Thistle Bloomsbury | 25. Washington Mayfair | 32. Thistle Euston |
| 5. Kensington Close | 12. Mostyn Hotel | 19. Langham Hotel London | 26. Hilton London Hyde Park | 33. Hilton London Park Lane |
| 6. St Giles Hotel | 13. Royal Horseguards | 20. Hilton London Metropole | 27. Hol. Inn Express Lon City | 34. Intercontinental Hyde Park |
| 7. Imperial Hotel | 14. Thistle Kensington Gdns | 21. Holiday Inn Oxford Circus | 28. Landmark Hotel | |

London



Destination: London

SIGHTSEEING



Essential London - Changing of the Guard & Trafalgar Square

This morning tour will take you past all the famous sights around London's West End, including Big Ben and the Houses of Parliament, Whitehall, Downing Street, Trafalgar Square and Nelson's Column. Also included is a guided tour of Westminster Abbey and a stop at Buckingham Palace for the Changing of the Guard.
from £31pp

Tower of London & Thames River Cruise

An afternoon tour of London - including a Thames River Cruise and visit to the Tower of London and Crown Jewels.
from £39pp

Hard Rock Café Experience

Enjoy VIP Fast track seating, any main course and dessert on the menu. Also, any soft drink with a free top up as many times as you like during your meal. A tour of the Private Hard Rock Vault, with a professional framed photo, as a memento of your visit to the world famous HARD ROCK CAFE.
from £32pp

London Showboat - Dinner cruise on Thames

The London Showboat is one of the most entertaining and unusual shows in town, successfully combining good food, good cabaret and a river boat cruise from the centre of London to the Thames Barrier and back.
from £70pp



★★★ Imperial Hotel

Russell Square

LOCATION: Russell Square.
ACCOMMODATION: 448 en-suite rooms.
FACILITIES: Television, radio, direct-dial telephone, tea/coffee making facilities, extensive conference facilities, internet hot spot in the Atrium, Casino, Atrium Coffee-Bar, hair salon, newsagent and ATM machine.
from £43 - £57 pp



★★★ St Giles Hotel

Tottenham Court Rd

LOCATION: Tottenham Court Road, London.
ACCOMMODATION: 670 en-suite rooms.
FACILITIES: Television, radio, in-room safe, tea/coffee making facilities, disabled rooms, car parking facilities (chargeable), extensive Leisure Centre located under the hotel, including a 25 metre indoor pool, sauna and exercise machines.
from £44 - £58 pp



★★★ PLUS Corus Hyde Park

Lancaster Gate

LOCATION: Hyde Park, London
ACCOMMODATION: 390 en-suite rooms.
FACILITIES: Television, radio, dial-up internet, in-room safe, tea/coffee making facilities, business and conference facilities and meeting rooms.
from £46 - £63 pp



★★★ PLUS Mostyn Hotel

Marble Arch

LOCATION: Marble Arch, London.
ACCOMMODATION: 121 en-suite rooms.
FACILITIES: Television, direct dial telephone, air-conditioning, high speed internet access, car parking facilities (chargeable), wireless internet in public areas and 24-hour room service.
from £56 - £63 pp



★★★★ Kensington Close

High Street Kensington

LOCATION: Kensington, London.
ACCOMMODATION: 550 en-suite rooms.
FACILITIES: Television, minibar, in-room safe, air-conditioning, high-speed internet access, disabled rooms, 24-hour room service, car parking facilities (chargeable), spa and fitness centre including heated swimming pool, Jacuzzi and a fully equipped gym.
from £50 - £66 pp



★★★★ Thistle Kensington Gardens

Queensway

LOCATION: Kensington, London.
ACCOMMODATION: 175 en-suite rooms.
FACILITIES: Television, minibar, air-conditioning, high-speed internet access, in-room safe, dry cleaning/laundry service, car parking facilities (chargeable), foreign currency exchange, banqueting facilities and 24-hour room service.
from £55 - £84 pp



London underground

SIGHTSEEING



London Pass

The London Pass is London's only inclusive sightseeing card, offering free entrance to over 50 of London's top attractions, including the Tower of London, Kensington Palace and St Paul's Cathedral. It also offers added benefits in shops and restaurants, including Harrods and the Hard Rock Café. With Fast Track entry at many locations, you save time as well as money. The London Pass offers over £600 worth of value. Choose from one of the following passes:

1 Day Pass £34 2 Day Pass £45
3 Day Pass £55 6 Day Pass £74

Oxford, Stratford & Cotswolds

A full day tour to the home of some of our best loved authors: Oxford, Stratford upon Avon and a scenic drive through the Cotswolds. Includes a walking tour of Oxford and a visit to Anne Hathaways cottage, the picture-postcard half-timbered childhood home of William Shakespeare's wife, set in lovely surroundings and containing a treasure-trove of historic domestic artefacts.

from £64 pp



★★★★

Thistle Euston Hotel

Euston Station



LOCATION: Between Regents Park and the British Library, London.
ACCOMMODATION: 362 en-suite rooms.
FACILITIES: Television, radio, direct-dial telephone, minibar, high-speed internet access, in-room safe, tea/coffee making facilities, laundry service, car parking facilities and 24-hour room service.

from £43 - £83 pp



★★★★

Holiday Inn Regents Park

Great Portland Street



LOCATION: Regents Park, London.
ACCOMMODATION: 332 en-suite rooms.
FACILITIES: Television, minibar, in-room safe, air-conditioning, high-speed internet access, tea/coffee making facilities, 24-hour room service, ATM machine and car park.

from £48 - £72 pp



★★★★

Hilton London Hyde Park

Queensway



LOCATION: Hyde Park, London.
ACCOMMODATION: 129 en-suite rooms.
FACILITIES: Television, direct dial telephone, minibar, air-conditioning, in-room safe, high-speed internet access, tea/coffee making facilities, dry cleaning facilities, 24-hour room service, foreign exchange facilities and Concierge service.

from £57 - £89 pp



★★★★ PLUS

Thistle Marble Arch

Marble Arch



LOCATION: Marble Arch, London.
ACCOMMODATION: 692 en-suite rooms.
FACILITIES: Television, wireless internet, minibar, in-room safe, tea/coffee making facilities, air-conditioning, dry cleaning/laundry service, 24-hour room service, business centre and disabled facilities.

from £70 - £101 pp



★★★★ DELUXE

Cumberland Hotel

Marble Arch



LOCATION: Marble Arch, London.
ACCOMMODATION: 1000 en-suite rooms.
FACILITIES: Plasma screen television, direct dial telephone, high-speed internet access, tea/coffee making facilities, air-conditioning, dry cleaning/laundry service, conference and banqueting facilities and wireless internet in public areas.

from £94 - £116 pp



★★★★ DELUXE

Radisson SAS Portman

Marble Arch



LOCATION: Marble Arch, London.
ACCOMMODATION: 272 en-suite rooms.
FACILITIES: Television, minibar, direct dial telephone, air-conditioning, high-speed internet access, in-room safe, disabled rooms, car parking facilities (chargeable), foreign currency exchange and 24-hour room service.

from £89 - £184 pp

Getting Around



Oyster cards

The Oyster card is an electronic card that allows you to work on a "Pay as you go" system for transportation in London. (Including the Tube, Docklands Light Railway, buses and trams, as well as some National Rail services). This card is currently only available to adults (any person 16 years or older). Children up to 5 years old will travel for free, when accompanied by an adult holding an Oyster Card. Children from 6-15 years will either need to purchase an Oyster Card at the adult rate or a regular child Travelcard.

The card can be pre-loaded with an initial balance of either £10 or £15. The card can then be topped up with additional money as required. The top-ups can be done at Tube stations, Oyster Ticket Stops and London Travel Information Centres, as well as selected National Rail stations.

Benefits of the Oyster card

1. You will only pay for travel that is done
2. There are no date restrictions on the "Pay as you go" balance on the card.
3. The card is reusable, simply add value to your card as and when you need to
4. The card is transferable, it can be passed onto friends/family who visit London
5. This card offers the best fares compared to cash or paper day-tickets
6. Perfect for frequent travellers to London.

London Underground

London has one of the most comprehensive public transport systems in the world. The London Underground, known as the "Tube"

has trains that criss-cross London in the largest underground rail network you'll find. The tube is made up of twelve lines, each bearing a traditional name and a standard colour that is reflected on the Tube Map.

London Travelcards

London Travelcards give you access to various zones within the transport system and are available through Thompsons Holidays before you go, in a choice of 1, 3 or 7 day Travelcards. Travelcards issued are Off-Peak which means that they are only valid from 09:30, however there is no cut off time in the afternoon. Of these zones, the Visitor's TravelCard offers two choices:

1. Central Zone TravelCard

The Central Zone covers Zones 1 and 2 which will cover all of London's major attractions within the centre of London.

2. All Zone TravelCard

This covers Zones 1 to 6, which includes London Heathrow Airport

Buses

London's iconic red buses are recognised all over the world and with 700 different bus routes, you are never far from a bus in London. For short trips, the buses are generally more convenient than the tube and are accessible on your London Travelcard as well, provided your route falls within the Zones that you have purchased.

Heathrow Express

The Heathrow Express is a high-speed, non-stop rail service between London's Heathrow

Airport and Paddington Station, located in central London. The service operates every 15 minutes and takes approximately 15 minutes from point to point. Paddington Station is serviced by four London Underground lines and connects to rail, bus routes and taxi's, for easy access to your final destination.

Private Transfers

A driver will meet you at your terminal arrival gate or platform with a board with "Your Name" written on. You will be escorted to your vehicle, with no-fuss or waiting. Then you can relax as the driver takes care of your trip to your hotel or accommodation, or other transfer points.

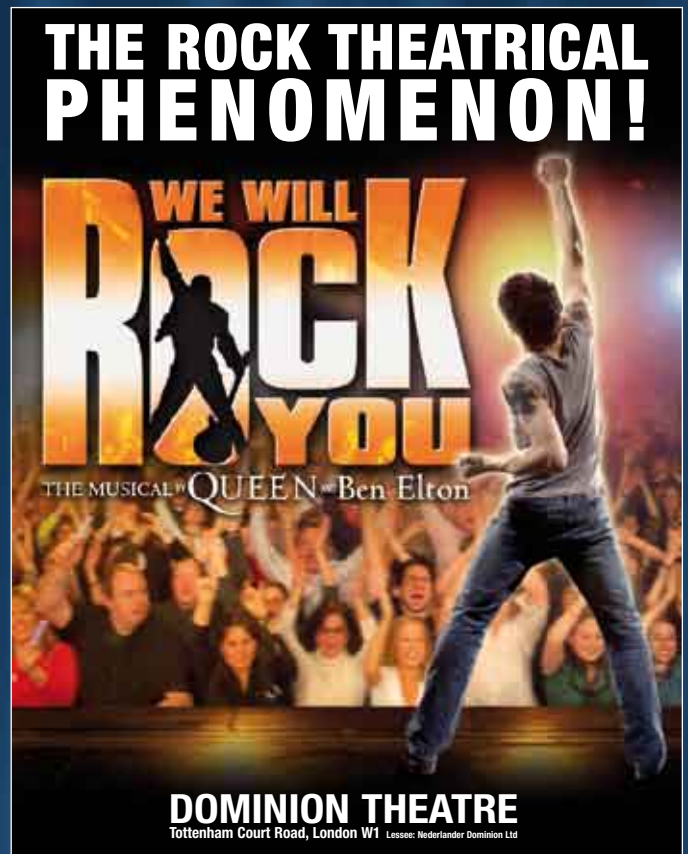
Dot 2 Dot - Shared Transfer

Dot 2 Dot operates scheduled transfer services from London's Heathrow and Gatwick Airports to central London hotels. Dot 2 Dot is door-to-door, convenient and hassle free. This is a shared shuttle service in a 12 seater minibus and passengers are dropped off at various hotels en route.

Eurostar

The Eurostar was Europe's first international train, designed to take advantage of the Channel Tunnel, providing a high speed rail service between London and Continental Europe. It is a remarkable 20 cars long, some 400 meters long and travels at a speed of 298km per hour. The Eurostar will operate from the Original St Pancras station - recently fully restored.

Book your theatre tickets with us before you leave and avoid the queues!



The Tower of London

The ancient stones reverberate with dark secrets, priceless jewels glint in fortified vaults and pampered ravens strut the grounds. The Tower of London is one of the world's most famous fortresses.

Visit in 2008 and discover how prisoners escaped this impressive fortress and how it defended the monarch and city from attack.

from £15 pp



Kensington Palace

Kensington Palace, the former home of Diana, Princess Of Wales and birthplace of Queen Victoria. Set in Kensington Gardens in the Royal Borough Of Kensington, this London Palace was William III and Mary II's principal residence when in London. Although the palace was originally a manor house, Sir Christopher Wren designed much of its existing architecture. The State Apartments and the Court Dress Collection are open to the public and highlights of a visit to the palace include the recently restored Kings Apartments and a magnificent collection of paintings. Visitors to Kensington Palace can also enjoy a stroll round the Palace's beautiful gardens.

from £12 pp



Hampton Court Palace

The flamboyant Henry VIII is most associated with this majestic palace, which he extended and developed after acquiring it in the 1520s.

Its many royal occupants have ensured the palace has fabulous furnishings, tapestries and paintings. It is set on 60 acres of formal gardens, which include the famous maze and the Great Vine

from £12 pp



Out and about in London

Madame Tussauds London



Madame Tussauds London

Experience the glittering world of fame for a day at Madame Tussauds. Brave the paparazzi and mingle with Brad, Angelina and all the other stars in your own A-list party before talking to Big Brother in the diary room. Then address the world alongside George Bush before accepting your music award on stage with Kylie and Justin Timberlake.

As of 01 April 2008 all entrance tickets to Madame Tussauds will include the Chamber Live.
from £20 pp

Images reproduced are figures at Madame Tussauds.

London Dungeon



London Dungeon

Transport yourself back to the darkest moments in the capital's history within the deep depths of the London Dungeon. Ninety minutes of thrills and chills... are you brave enough?

New For 2008 - Jack the Ripper:

1898, and the fear rises inside you as you enter Jack the Ripper's Whitechapel. As you wander the stinking slums, the true horror of his terrible crimes are revealed in bloody, graphic detail. And then a scream, the flash of a cloak and an evil smile as you come face to face with Jack the Ripper himself... will you survive?

from £18 pp

The Dungeons is not suitable for young children or those of a nervous disposition. Ride restrictions apply for Extremis.

London Eye



London Eye

At 135 metres, the London Eye is the world's tallest cantilevered wheel, with 40km panoramic views on a clear day. The gradual flight (ride) in one of the 32 high-tech glass capsules takes approximately 30 minutes, offering spectacular views of London and its famous landmarks.

from £15.50 pp

River Cruise

The 40 minute River Cruise Experience departs conveniently from a pier next to the London Eye. Highlights include the Houses of Parliament, Tower of London, HMS Belfast and Tate Modern all with live commentary.

from £12 pp

Exploring Britain



Lush English countryside

SIGHTSEEING



Great British Heritage Pass

The Great British Heritage Pass - a must for your Britain visit! Britain boasts some of the richest history in the world, and the abundance of magnificent, olde world properties throughout England, Scotland, Wales and Northern Ireland are testament to this. With the Great British Heritage Pass you can visit them all - just buy an affordable one-off pass, and you will be granted free entry to over 580 UK heritage properties. Designed exclusively for the visitor, the Great British Heritage Pass takes you to world renowned properties, as well as hidden gems, all together for one price, on one pass!

Individual Passes

4 Day Pass	£29pp
7 Day Pass	£41pp
15 Day Pass	£55pp
30 Day Pass	£74pp

Family Passes 2 Adults + up to 3 children

5-18 yrs	
4 Day Pass	£64
7 Day Pass	£89
15 Day Pass	£117
30 Day Pass	£159

Loch Lomond National Park and Stirling Castle

A day spent in the land of Scots heroes Rob Roy, Robert the Bruce and William Wallace, taking in the magnificent splendour of the medieval stronghold of Stirling Castle, the beautiful nature and forests of Scotland's first National Park and the remote north east side of the bonny banks of Loch Lomond. Tour departs from and returns to Edinburgh

From £31pp



★★★★ Thistle Birmingham City - Birmingham

LOCATION: City Centre
ACCOMMODATION: 133 en-suite rooms
FACILITIES: Satellite television, in-room safe, minibar, internet access, air-conditioning, tea/coffee making facilities and 24-hour room service.

from £52 - £87 pp



★★★★ Thistle Hotel - Cardiff

LOCATION: City Centre
ACCOMMODATION: 140 en-suite rooms
FACILITIES: Satellite television, minibar, in-room safe, air-conditioning, kitchenette with microwave oven and coffee making facilities, laundry/dry cleaning service and room service.

from £77 - £154 pp



★★★ Jurys Inn - Edinburgh

LOCATION: City Centre
ACCOMMODATION: 186 en-suite rooms
FACILITIES: Television, direct dial telephone, high speed internet access, in-room safe, tea/coffee making facilities, laundry service, foreign currency exchange and disabled facilities.

from £35 - £105 pp



★★★ Jurys Inn - Glasgow

LOCATION: City Centre
ACCOMMODATION: 321 en-suite rooms
FACILITIES: Satellite television, telephone, high-speed internet access, tea/coffee making facilities, dry cleaning service, 24-hour room service.

from £49 - £77 pp



★★★ Ramada Piccadilly Hotel - Manchester

LOCATION: City Centre
ACCOMMODATION: 272 en-suite rooms
FACILITIES: Television, in-room safe, tea/coffee making facilities, car parking facilities, and a health Club with indoor and outdoor swimming pool.

from £46 - £57 pp



★★★ Novotel Hotel - York

LOCATION: City Centre
ACCOMMODATION: 124 en-suite rooms
FACILITIES: Television, direct-dial telephone, high-speed internet access, tea/coffee making facilities, heated indoor swimming pool, dry cleaning facilities, free car parking facilities, foreign currency exchange and disabled facilities.

from £48 - £55 pp